

## human TFPI

Product No. ADG49

### Description

Full-length recombinant human tissue factor pathway inhibitor (TFPI) with C-terminal His-Tag expressed in HEK cells. The protein was purified from serum-free cell culture media using affinity chromatography.

### Intended Use

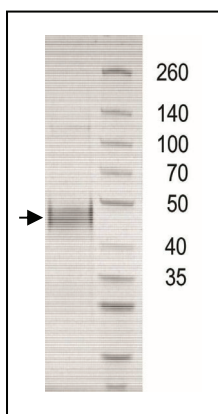
This product is intended to serve as a positive control for Western blot studies.

### Properties

Although this product is intended for identity studies, this particular lot inhibited the catalytic activity of the TF/FVIIa complex to activate factor X to factor Xa (using the ACTICHROME® TFPI chromogenic activity kit, product no. 848).

### Purity

Estimated at greater than 95% per SDS gel electrophoresis and coomassie staining. ADG49B appears as a single band at approximately 45 kDa.



### Presentation

Clear glass screw capped vial containing 5 µg of recombinant human TFPI lyophilized from 50 µl of 50 mM Tris/HCl, 0.1 M NaCl, pH 7.4 with 0.2 M Mannitol added as an excipient. No preservatives have been added.

### Reconstitution

Add 50 µl of filtered deionized water to dissolve the protein and generate a 100 µg/ml solution. When diluting TFPI below 100 µg/ml, it is recommended to add a carrier protein to prevent protein loss from sticking to glass surfaces.

### Storage

Store lyophilized protein at 2°-8°C. Aliquot and store reconstituted protein in plastic tubes at -20 °C or colder. Avoid freeze-thaw cycles.

### References

Syndecan-3 and TFPI colocalize on the surface of endothelial-, smooth muscle-, and cancer cells. Tinholt M. et al., PLoS One. 2015 Jan 24;10(1):e0117404

### Distributed by:

**LOXO** GMBH

IMMUNOLOGIE • MOLEKULARBIOLOGIE  
 BIOCHEMIE • PRODUKTE UND SYSTEME

Gerhart-Hauptmann-Str. 48  
 69221 Dossenheim

Tel +49 6221 868023

Fax +49 6221 8680255

www.loxo.de - info@loxox.de

### Hinweis/Note:

Der Packungsbeileger dient nur als erste Information. Der relevante Packungsbeileger liegt der Ware bei.  
 The datasheet is for information purposes only. The current datasheet will be enclosed with product shipment.

**For research use only!**